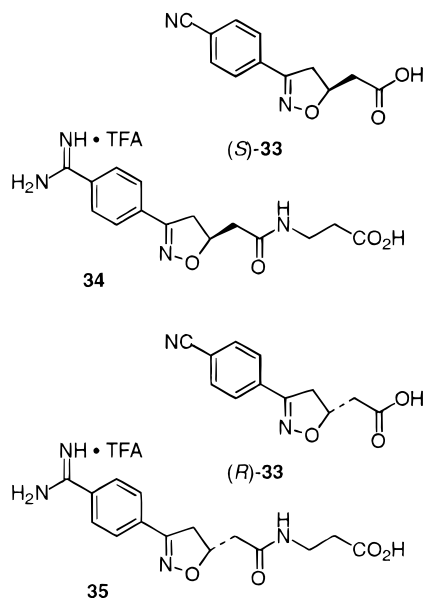


Additions and Corrections

1997, Volume 40

John Wityak,* Thais M. Sielecki, Donald J. Pinto, George Emmett, Jean Y. Sze, Jie Liu, A. Ewa Tobin, Shuaige Wang, Biao Jiang, Philip Ma, Shaker A. Mousa, Richard E. Olson, and Ruth R. Wexler: The Discovery of Potent Isoxazoline Glycoprotein IIb/IIIa Receptor Antagonists.

Page 53. The authors regret that the structures (*S*)-**33**, (*R*)-**33**, **34** and **35** were drawn depicting the wrong absolute configuration. Structures depicting the correct absolute configuration are shown below.



JM970051F